

REGENCY

YOUR COMPLETE OFFICE SOLUTION

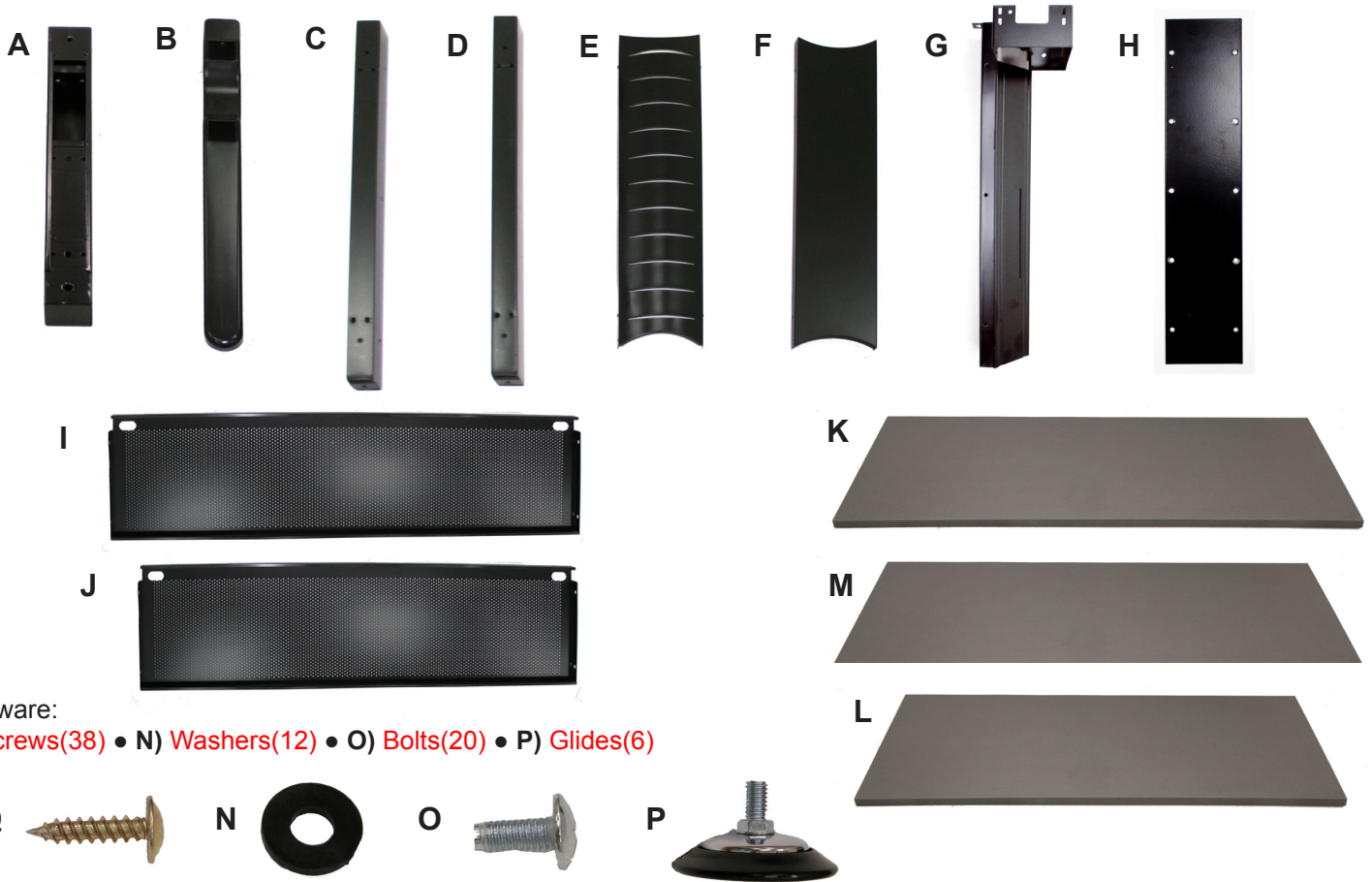
MUDS663042, MUDS663048, MUDS723042, MUDS723048 - INSTRUCTIONS
 Organize your parts and hardware. You will need (2) people, a Phillips head screwdriver and a rubber mallet.



Parts:

A) Top Bracket(2) • B) Foot Bracket(2) • C) Back Support(2) • D) Front Support(2) • E) Exterior Leg Cover(2) • F) Interior Leg Cover(2) • G) Corner Leg(2) • H) Flat Bracket(2) • I) Long Modesty • J) Short Modesty(2) • K) 30" Deep Long Table Top • L) Short Table Top • M) 24" Deep Long Table Top

NOTE: Back Supports differ from Front Supports with additional holes for modesty attachment.



Hardware:

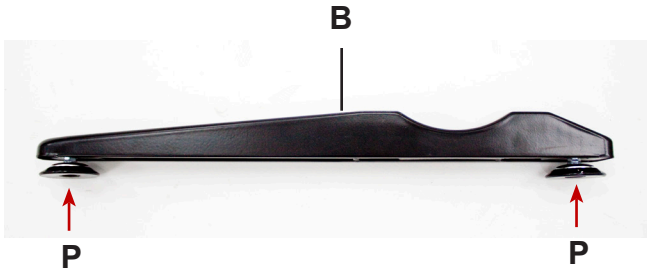
Q) Screws(38) • N) Washers(12) • O) Bolts(20) • P) Glides(6)

IMPORTANT NOTICE:

- Place all wooden parts on a clean and smooth surface such as a rug or carpet to avoid the parts from being scratched.
- Check to be sure that you have all parts and hardware.
- Remove all wrapping materials, including staples & packing straps before you start to assemble.
- Do not tighten all screws/bolts until completely assembled.
- Keep all hardware parts out of reach of children.

MUDS663042, MUDS663048, MUDS723042, MUDS723048 - INSTRUCTIONS

STEP 1: Insert 2 Glides(P) into each of the Foot Brackets(B).



STEP 2: Insert 1 Glide(P) into each Corner Leg(G).



BEFORE STARTING STEP 3A-B, NOTE THE HOLE PLACEMENT IN FIGURE 1.

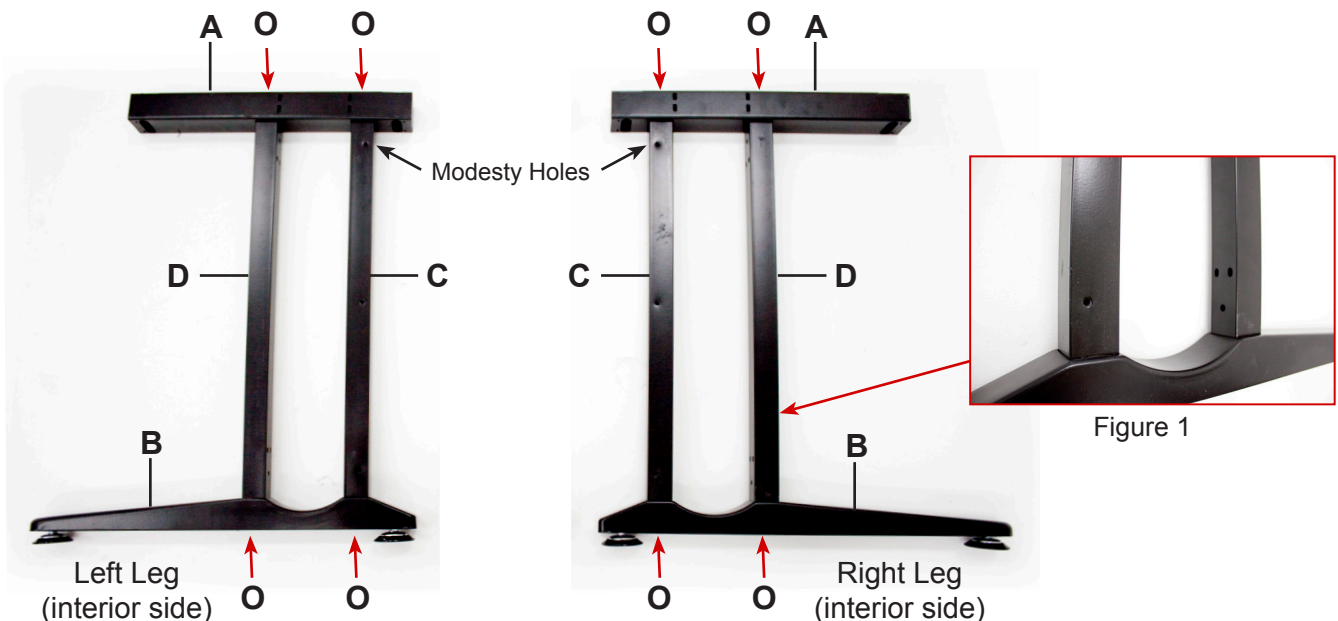
The set of three holes on each of the Front Supports and Back Supports should face in toward one another.

STEP 3A: Assemble Legs by inserting **Back Supports(C)** into each **Foot Bracket(B)**.

NOTE: Modesty Holes on Back Supports should face interior side as shown below.

STEP 3B: Now insert the **Front Supports(D)** into each **Foot Bracket(B)**. Then insert each **Top Bracket(A)** into the **Front Supports(D)** and **Back Supports(C)**. Finally, attach the **Foot Brackets(B)** and **Top Brackets(A)** to the **Front Supports(D)** and **Back Supports(C)** with 4 **Bolts(O)** per Leg.

NOTE: Do not tighten bolts until all bolts have been started.

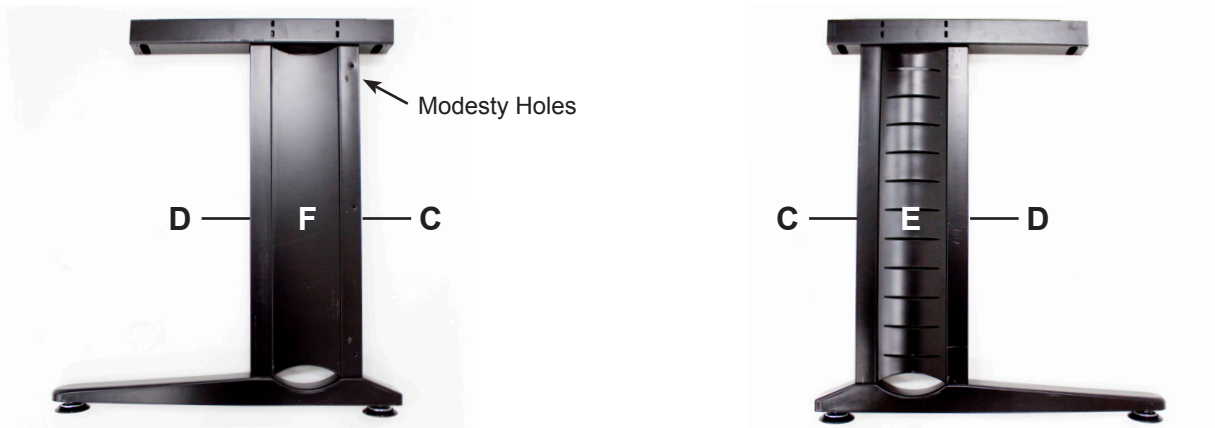


MUDS663042, MUDS663048, MUDS723042, MUDS723048 - INSTRUCTIONS

STEP 4A: Snap the **Interior Leg Cover(F)** into **Back Support(C)** and **Front Support(D)** using a rubber mallet.

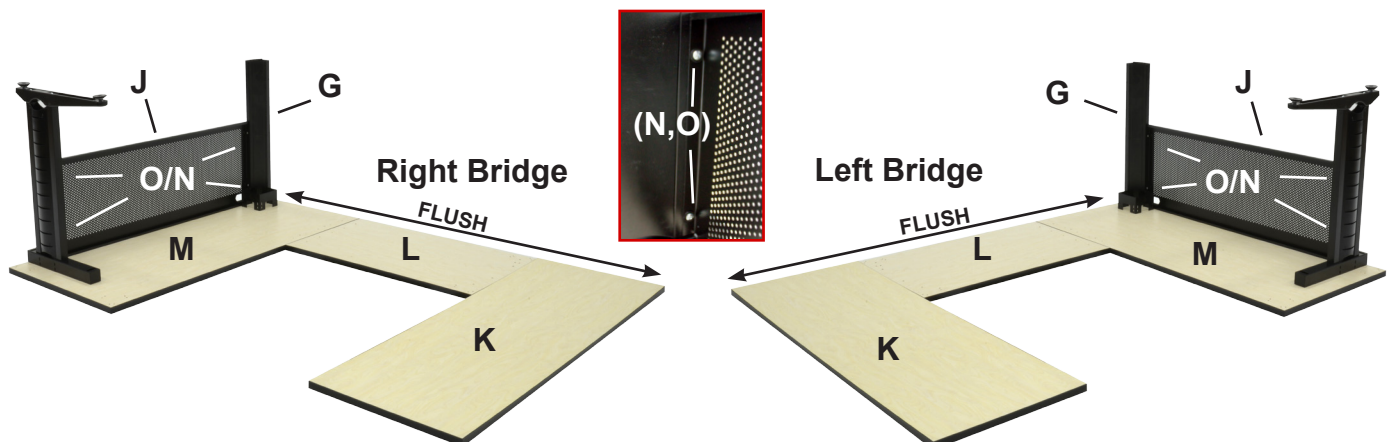
NOTE: Interior Leg Cover is installed on the side with the modesty holes.

STEP 4B: Snap the **Exterior Leg Cover(E)** into **Back Support(C)** and **Front Support(D)** using a rubber mallet. The assembled legs will now be referred to as the **End Legs**.



NOTE : PRODUCT IS REVERSIBLE.
THE FOLLOWING STEP INCLUDES BOTH RIGHT AND LEFT ORIENTATIONS.
THE REMAINING STEPS ARE THE SAME NO MATTER THE ORIENTATION.

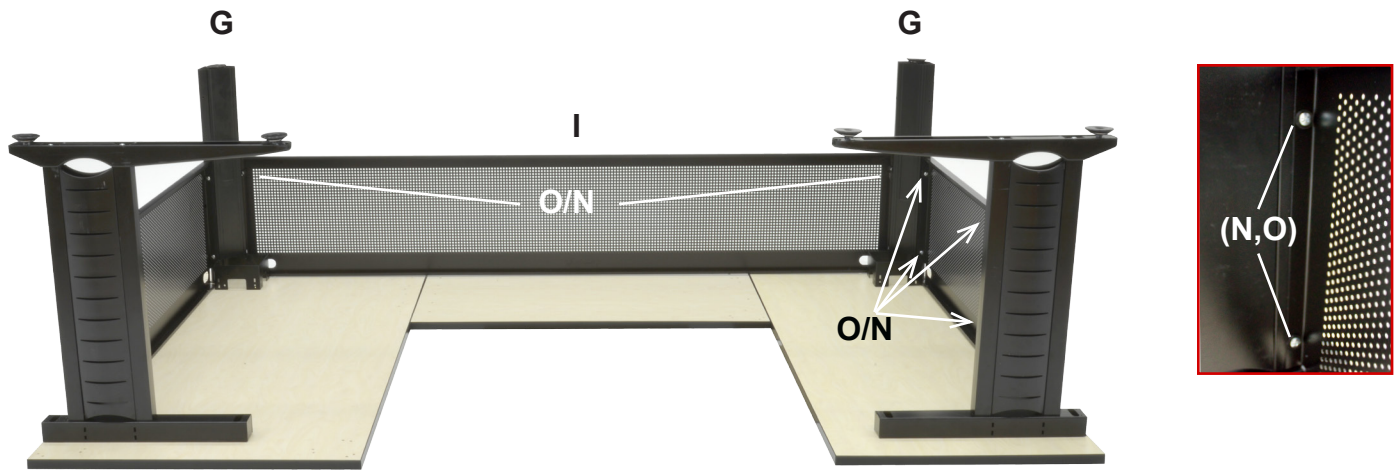
STEP 6: Choose your desk orientation and place the **30" Deep Long Table Top(K)**, **24" Deep Long Table Top(M)**, and **Short Table Top(L)** on a clean flat surface with desired table finish face down so the sides of the three tops are flush on the long "connecting" side. Connect an **End Leg** to one **Short Modesty(J)** with **2 Bolts(O)** and **2 Washers(N)** ensure the lip of the modesty is facing toward the **Short Top(M)**. Then Connect the opposite end of the **Short Modesty(J)** to **1 Corner Leg(G)** with **2 Bolts(O)** and **2 Washers(N)** as shown below. Be sure there is no gap between the modesty and the top. If so, loosen **Bolts(O)** and adjust. **DO NOT ATTACH TO THE TOPS.**



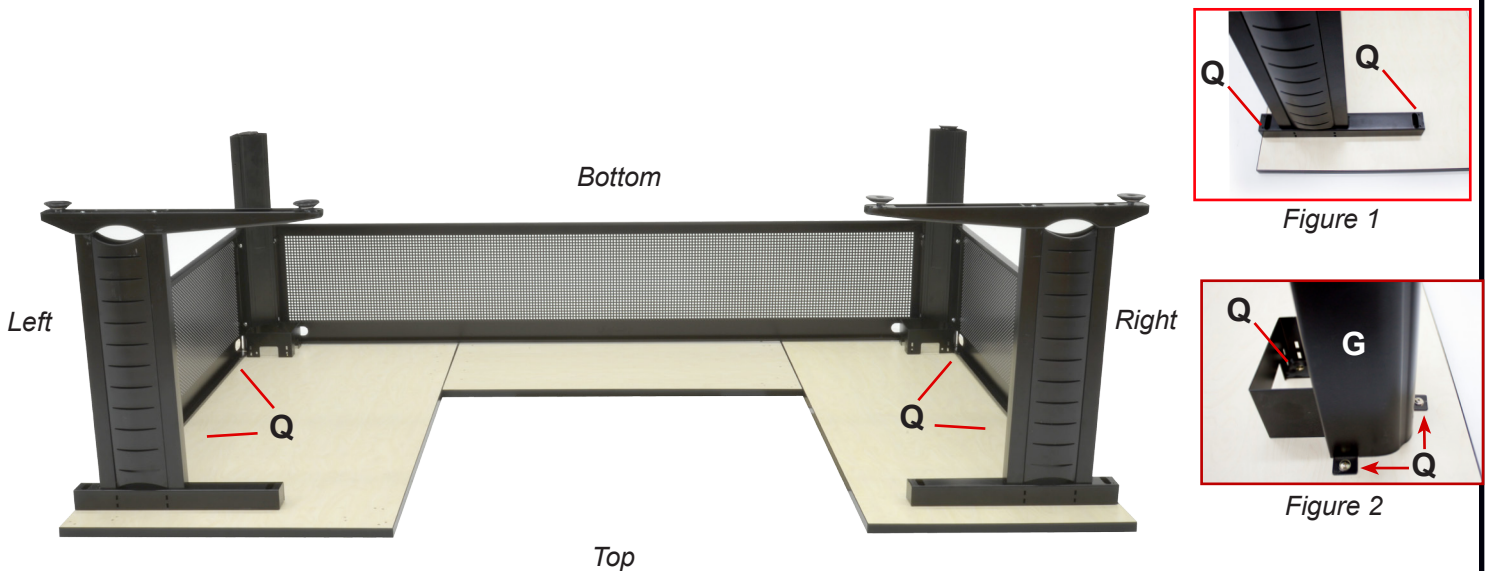
MUDS663042, MUDS663048, MUDS723042, MUDS723048 - INSTRUCTIONS

STEP 7A: Attach Long Modesty(I) to existing Corner Leg(G) and add a second Corner Leg(G) with 1 Bolt(O) and 1 Washers(N) each leg. **ONLY HAND TIGHTEN AS THIS WILL BE REMOVED LATER.**

STEP 7B: Connect the second End Leg to the remaining Short Modesty(J) and Corner Leg(G) with 4 Bolts(O) and 4 Washers(N). **TIGHTEN STEP 7B BOLTS.**



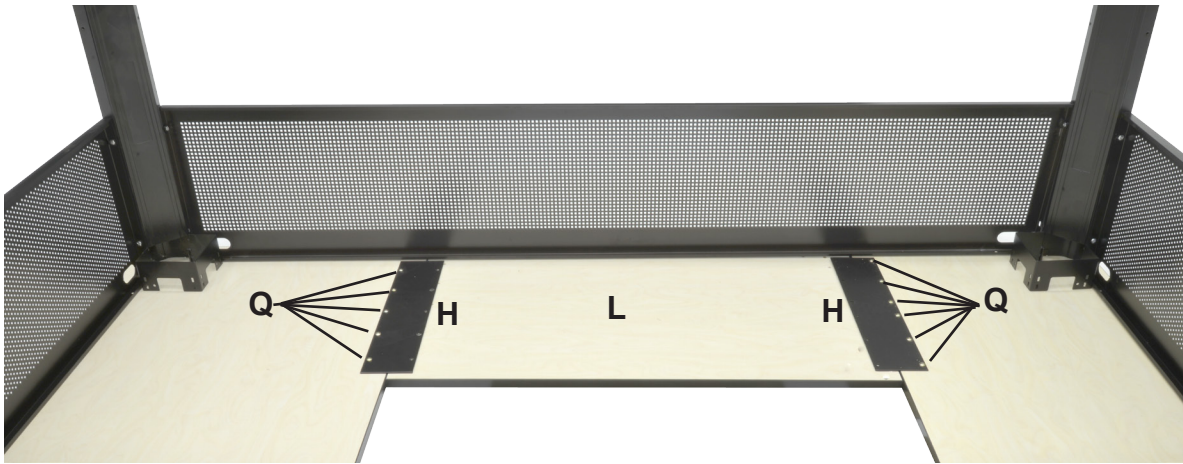
STEP 8: Square the legs and modesties using a tape measure. Arrange all metal components so there is an equal margin on the top/bottom & left/right sides. Connect the **End Legs** and **Corner Legs(G)** to the tops as *figure 1* and *2* depict. For extra support connect the Short Modesties(J) to the table top using 2 Screws(Q) each modesty.



MUDS663042, MUDS663048, MUDS723042, MUDS723048 - INSTRUCTIONS

STEP 9A: Place 2 **Flat Brackets(H)** evenly spaced over the **Short Table Top(L)** connections with the two Long Table Tops. Using 12 **Screws(Q)** attach the **Flat Brackets(6 screws each)** on the **LONG TABLE TOP SIDE ONLY** as depicted in the image below.

STEP 9B: Remove the **Long Modesty(I)** from the **Corner Legs(G)** and flip over the Desk/Credenza so they are standing upright and in the position you would like the "U" group to be. Be sure to leave space for the removed modesty and short top.



STEP 10: Reconnect the **Long Modesty(I)** to the **Corner Legs(G)** using 2 **Bolts(O)** and 2 **Washers(N)** each leg. Place the **Short Top(L)** in position and attach to **Flat Brackets(H)** using 12 **Screws(Q)** 6 screws each bracket. For extra support connect the Modesty(I) to the table top using 2 **Screws(Q)**.

